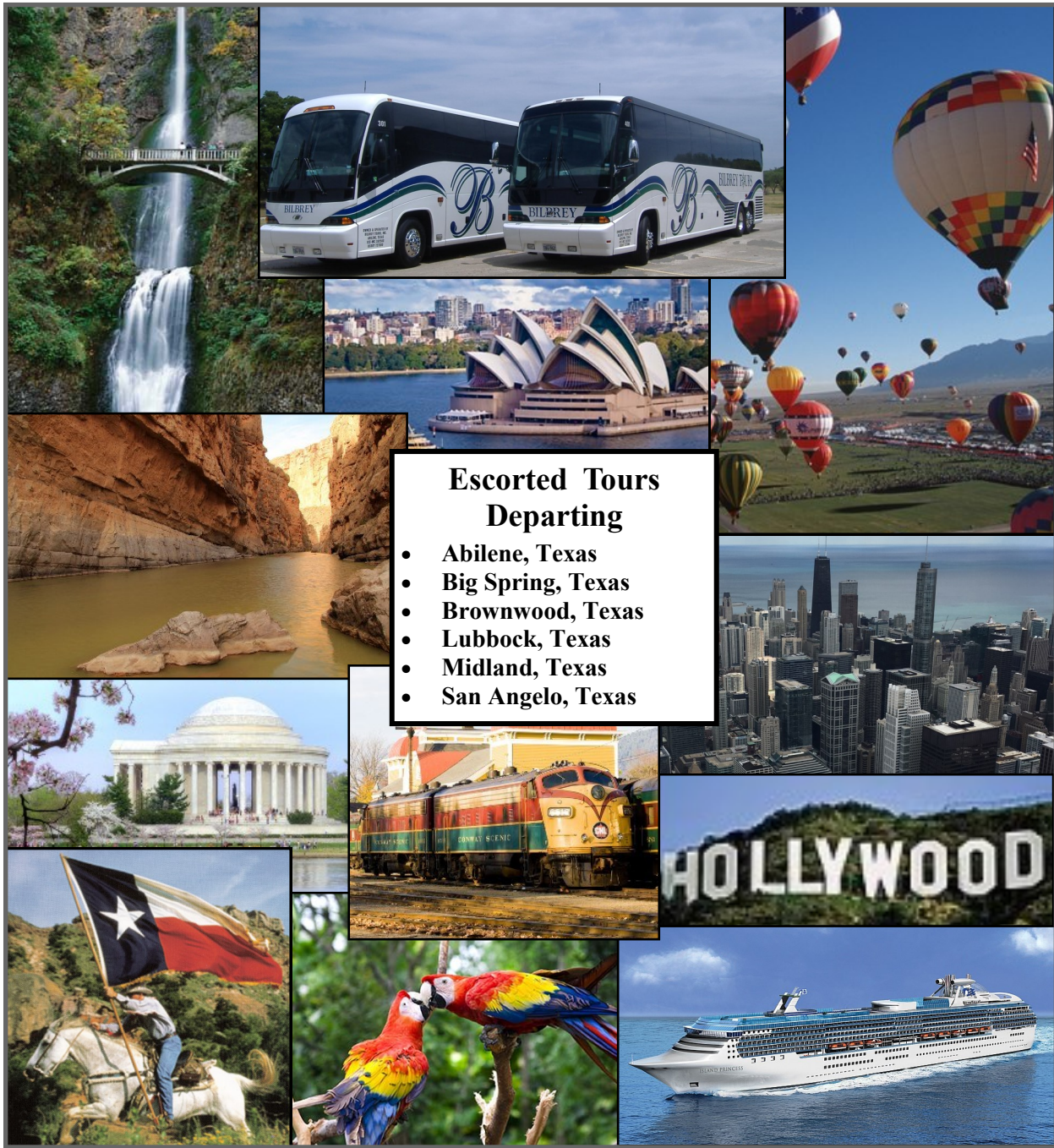


2018 Escorted Tours

BILBREY TOURS



Escorted Tours Departing

- Abilene, Texas
- Big Spring, Texas
- Brownwood, Texas
- Lubbock, Texas
- Midland, Texas
- San Angelo, Texas

3262 South 27th Street, Abilene, Texas 79605

(325) 692-1308 or 1-888-692-1308

January 2018

**January
2018 Edition**

Bilbrey Tours, Inc.



Index

Day Trips.....	3-4
2018 Tours.....	5-13
2019 Tours.....	14

2018

March:

Big Bend National Park.....	5
Iceland's Magical Northern Lights.....	5
Sample of the South.....	5

April:

America the Beautiful.....	6
Hidden Gems of North Texas.....	6
Fredericksburg.....	3
Heartland of America.....	6

May:

Gaither's Texas Homecoming Spectacular.....	3
Spring Mystery Tour.....	7

June:

Magnificent Midwest.....	7
Cowboys and Legends.....	7
Texas Rangers Game.....	3
Boston & More!.....	8

July:

Alaska Cruise Tour.....	8
Palo Duro Canyon.....	9
Splendors of the Northwest.....	9

August:

<i>The Psalmist</i>	3
---------------------------	---

September:

<i>School of Rock</i>	3
Rhine River Cruise.....	10
Made in America.....	10
Granbury & Glenrose.....	4
From State Capital to Silos.....	10



PASSPORT REQUIREMENTS

- Passports are required for all travel outside the United States.

October:

Fall Trains & Foliage.....	11
Albuquerque Balloon Fiesta.....	11
Autumn at the Arboretum.....	4
Kentucky Bluegrass Fall Foliage.....	12
Autumn in the Mountains of Arkansas.....	12

November:

Branson Christmas.....	12
San Antonio Christmas.....	13
Smoky Mountain Christmas.....	13

December:

Christmas Shopping Spree.....	4
Christmas Mystery Tour.....	13
Enchanting Christmas.....	4
Pasadena Rose Parade.....	13

2019

February:

Costa Rica.....	14
Australia & New Zealand.....	14

Bilbrey Tours Tips

1. You may sign up on a tour after final payment date if space is available.
2. Book early on International Tours, Cruises and Fly-Ins to guarantee your seat due to airline availability.
3. We recommend purchasing Travel Protection Insurance to protect your money in the event of an illness to you or an immediate family member. Ask for a copy of the insurance policy.

**January
2018 Edition**

Bilbrey Tours, Inc.



Day Trips

Fredericksburg Saturday, April 21, 2018

Departing Abilene

Highlights Include:

- Choice of **Fredericksburg Trade Days**; over 400 vendors with antiques, collectibles, unique clothing, jewelry, food, live music and so much more.
- OR shop and browse **downtown Fredericksburg's** quaint shops and restaurants

\$79 per person

Full payment due upon booking

Bill & Gloria Gaither present Texas Homecoming Spectacular Verizon Theatre - Grand Prairie Saturday, May 5, 2018

Departing Abilene

Highlights Include:

- 1 PM Performance
- Mark Lowry, Lynda Randle, Goodman Revival, The Martins, Buddy Greene, The Nelons and more

\$159 per person

Full payment due upon booking

Texas Rangers vs. Houston Astros Sunday, June 10, 2018

Departing Abilene

Highlights Include:

- Texas Rangers vs. Houston Astros at Globe Life Park in Arlington.
- Includes all you can eat hot dogs, nachos, peanuts, popcorn, chicken sandwiches and soft drinks.



\$139 per person

Full payment due upon booking

***The Psalmist* Ragtown Gospel Theater Saturday, August 18, 2018**

Departing Abilene

Highlights Include:

- Matinee performance at the beautiful, indoor Ragtown Gospel Theater in Post.
- Celebrate the relationship between David and the Spirit of the Lord as shared in the 23rd Psalm.
- Chip Polk and the Ragtown Gospel Vocal Band provide inspirational gospel music.
- Dinner included

\$99 per person

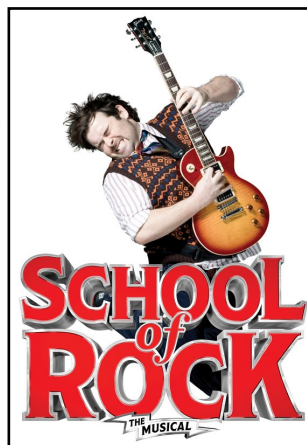
\$25 due upon booking - Final due July 11, 2018

***School of Rock* Bass Performance Hall Saturday, September 1, 2018**

Departing Abilene

Highlights Include:

- Matinee at Bass Performance Hall-Fort Worth.
- *School of Rock* - This irresistible musical following Dewey Finn, a failed wannabe rock star who decides to earn a few extra bucks by posing as a substitute teacher at a prestigious prep school. There he turns a class of straight-A students into a mind-blowing rock band.
- Family-friendly experience for grandchildren, nieces, nephews and ALL ages!



\$199 per person

\$25 due upon booking - Final due July 18, 2018

January
2018 Edition

Bilbrey Tours, Inc.



Granbury Opera House & Glenrose *The Promise* Saturday, September 22, 2018

Departing Abilene

Highlights Include:

- A double-feature day!
- Matinee performance of *You Can't Take it With You* is a 1938 comedy about a man from a family of rich snobs who becomes engaged to a woman from a good-natured but decidedly eccentric family.
- Evening performance of *The Promise*; a one-of-a-kind musical production performed annually at the Texas Amphitheater. The 150-person cast, crew, live animals, historically accurate costumes and breath-taking lights, sound and special effects, all of which tell the story of the life of Jesus Christ.
- Dinner included

\$199 per person

\$25 due upon booking - Final due August 10, 2018

Autumn at the Arboretum Wednesday, October 17, 2018

Departing Abilene

Highlights Include:

- **Dallas Arboretum** is a favorite Fall tradition. The fall festival is a spectacular show of color with 4,500 Chrysanthemums, along with 150,000 fall blooming plants.
- Internationally acclaimed Pumpkin Village features more than 90,000 pumpkins, squash, and gourds.
- Named "One of the World's 15 Most Breathtaking Gardens" by Architectural Digest.
- Lunch included

\$129 per person

\$25 due upon booking - Final due September 3, 2018

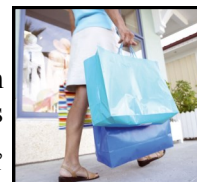


Christmas Shopping Spree Saturday, December 1, 2018

Departing Abilene

Highlights Include:

- Choice of **Galleria Dallas** with stores to include Macy's, Dallas Cowboy Pro Shop, Nordstrom, American Girl, Coach, and H&M
- **OR Grapevine Mills** with more than 180 discount stores to include Burlington, Ann Taylor, Chico's Outlet, Marshalls, Disney Outlet, Neiman Marcus Last Call and Saks Fifth Ave Outlet



\$69 per person

\$25 due upon booking - Final due November 1, 2018

Enchanting Christmas Tuesday, December 11, 2018

Departing Abilene

Highlights Include:

- Gaylord Texan Resort in Grapevine brings the magic of a winter wonderland indoor with its annual ICE! Exhibit. Featuring more than 2 million pounds of colorful, hand-carved sculptures created by more than 40 ice sculptors into symbols of Christmas and holiday characters.
- **ICE!** also boasts one-and-a-half million twinkling lights, 12,000 ornaments, a 52-foot-tall rotating Christmas tree, and a life-sized gingerbread house.
- Shopping in historic downtown Grapevine, TX, the Christmas Capitol of Texas
- A world of Christmas wonder awaits at **Enchant** in Arlington. **Enchant** hosts the world's largest Christmas light maze and also displays holiday crafts from around the world in the Christmas marketplace.



\$139 per person

\$25 due upon booking - Final due October 29, 2018

**January
2018 Edition**

Bilbrey Tours, Inc.



2018 Tours

Big Bend National Park

March 7 - 10, 2018

(4 days – 3 nights)

Departing Abilene and San Angelo

Highlights Include:

- Big Bend National Park Tour
- Santa Elena Canyon
- Rio Grande River
- Chisos Mountains
- Sotol Vista Overlook
- Terlingua Ghost Town
- Historic Fort Davis
- Davis Mountains
- Annie Riggs Museum
- McDonald Observatory
- Marfa Lights
- Meals: 2 breakfasts, 1 continental breakfast, 4 lunches or dinners



\$899 per person (2 people per room)

\$1140 per person (1 person per room)

Travel Protection Insurance: \$99-137 per person

\$25 due upon booking - Final due January 24, 2018

Sample of the South Spotlighting Mississippi Gulf Coast

March 23 - 29, 2018

(7 days – 6 nights)

Departing Abilene, Big Spring, Midland and San Angelo

Highlights Include:

- 2- nights at Beau Rivage Resort Casino-Biloxi, MS
- Tour of Bellingrath Gardens and Home
- New Orleans City Tour
- French Quarter
- Vicksburg National Military Park
- Biloxi Lighthouse
- Katrina Tree Sculptures
- Linden Plantation Gardens
- Shrimp Boat Excursion
- Jean Lafitte Acadian Cultural Center
- Meals: 2 breakfasts, 4 continental breakfasts, 5 lunches or dinners

\$1339 per person (2 people per room)

\$1651 per person (1 person per room)

Travel Protection Insurance: \$137-177 per person

\$25 due upon booking - Final due February 1, 2018

Iceland's Magical Northern Lights

March 10 - 17, 2018

(8 days – 7 nights)

Departing Abilene

Highlights Include:

- Roundtrip transportation to DFW
- Roundtrip air from DFW; call for prices from other airports
- Reykjavik, Iceland
- Northern Lights Cruise
- Golden Circle
- Thingvellir National Park
- Geysir geothermal fields
- Gullfoss waterfall
- Seljalandsfoss waterfall
- Vik, Iceland
- Eyjafjallajokull Volcano Visitor Centre
- Skogar Museum
- Skogafoss waterfall



- Jokulsarlon Glacial Lagoon
- Skaftafell National Park
- Vatnajokull Glacier
- Blue Lagoon
- Meals: 5 breakfasts & 5 dinners

\$4069 per person (2 people per room)

\$4369 per person (1 person per room)

Full payment due upon booking

Travel Protection Insurance: \$280 per person

Insurance is optional and due upon booking; premium is non-refundable. *Medicare does not pay outside the United States.* Tour is operated by Collette.

NOTE: Passport Required



**January
2018 Edition**

Bilbrey Tours, Inc.



**America the Beautiful
Including Washington DC
& Norfolk, VA**

April 4 - 16, 2018
(13 days – 12 nights)

There is nothing more majestic than witnessing our great nation come to life during the spring. This 13-day tour crosses 10 states - Texas, Arkansas, Tennessee, Virginia, North Carolina, South Carolina, Georgia, Alabama, Mississippi, Louisiana & the District of Columbia; never to retrace any road until our final day entering Texas.

Departing Abilene, Big Spring, Midland and San Angelo
Highlights Include:

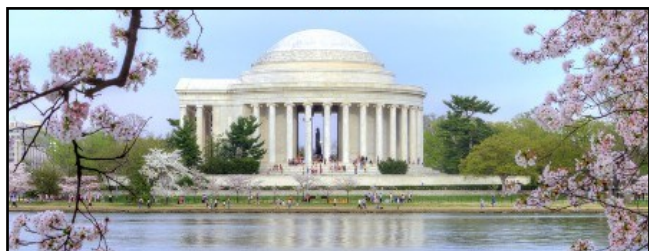
- Washington DC during cherry blossom season
- Smithsonian Museums
- Lincoln Memorial
- Vietnam Veterans Memorial
- White House (exterior viewing)
- Monticello
- Mount Vernon
- Illumination tour of Monuments
- The Museum of the Bible (opened Nov 2017)
- Arlington National Cemetery
- Tomb of the Unknown Soldier
- Norfolk Naval Air Station
- Nauticus – science center and museum
- Battleship Wisconsin
- Douglas MacArthur's Memorial Museum
- Wright Brother's Kitty Hawk
- Bodie Lighthouse
- NASCAR Hall of Fame
- Meals: 6 breakfasts, 6 continental breakfasts, 10 lunches or dinners

\$2985 per person (2 people per room)

\$3970 per person (1 person per room)

Travel Protection Insurance: \$239-316 per person

\$50 due upon booking - Final due February 15, 2018



Hidden Gems of North Texas

April 12 - 13, 2018
(2 days – 1 night)

Departing Abilene and San Angelo

Highlights Include:

- **Valley View, TX** - A true Cowboy lunch & Cowboy Mounted Shooting exhibition
- **Whitesboro, TX** - Explore one of the largest horse breeding operations in North Texas
- **Saint Jo, TX** - Visit the works of Donna Howell Sickles – National Cowgirl Hall of Fame inductee, & tour a Texas family owned and operated winery
- **Denton, TX** - Inaugural gowns of the First Ladies of Texas & tour Little Chapel in-the-Woods
- **Pilot Point, TX** - The Koeman family moved from Holland to Texas to create Texas-Tulips!
- Meals: 1 continental breakfast, 3 lunches or dinners

\$429 per person (2 people per room)

\$490 per person (1 person per room)

Travel Protection Insurance: \$68 per person

\$25 due upon booking - Final due March 1, 2018

**Heartland of America
Including Iowa Tulip Festival**

April 30 - May 7, 2018
(8 days – 7 nights)

Departing Abilene, Big Spring, Midland and San Angelo

Highlights Include:

- Pella Iowa Tulip Festival
- Historical Dutch Village
- Klokkenspel
- Vermeer Dutch windmill
- Lighted Volks Parade
- Dutch dancers and Street Scrubbers
- Herbert Hoover National Historic Site
- John Wayne Birthplace & Museum
- Covered Bridges of Madison County
- Mark Twain Home & Center, Hannibal MO
- Winston Churchill National Museum
- Tour of Amana Colonies
- Arabia Steamboat Museum, Kansas City MO
- Meals: 7 continental breakfasts, 6 lunches or dinners

\$1519 per person (2 people per room)

\$1965 per person (1 person per room)

Travel Protection Insurance: \$177 per person

\$50 due upon booking - Final due March 5, 2018

**January
2018 Edition**

Bilbrey Tours, Inc.



**Spring Mystery Tour
May 14 - 20, 2018
(7 days – 6 nights)**

Departing Abilene, Big Spring, Midland and San Angelo
Highlights Include:

- Join us on our Spring Mystery Tour to an unknown destination!
- Meals: 6 continental breakfasts,
5 lunches or dinners

\$1529 per person (2 people per room)

\$1949 per person (1 person per room)

Travel Protection Insurance: \$177 per person

\$25 deposit due Dec 13 - Final due March 22, 2018

**Cowboys and Legends
Northeast Oklahoma
June 5 - 8, 2018
(4 days – 3 nights)**

Departing Abilene

Highlights Include:

- Oklahoma City
- Bartlesville
- Claremore
- National Cowboy & Western Heritage Museum
- Pioneer Woman Mercantile
- Dinner at Mercantile
- Will Rogers Memorial & Museum
- Will Rogers Birthplace Ranch
- Frank Phillips Home
- Phillips Petroleum Company Museum
- Woolaroc Museum & 3,700 acre Wildlife Preserve
- Frank Lloyd Wright's Price Tower
- Meals: 3 continental breakfasts,
4 lunches or dinners



\$759 per person (2 people per room)

\$915 per person (1 person per room)

Travel Protection Insurance: \$99 per person

\$25 due upon booking - Final due April 20, 2018

**Magnificent Midwest
Highlighting Illinois & Wisconsin
June 3 - 12, 2018
(10 days – 9 nights)**

What's on your bucket list? Visiting Abraham Lincoln's home? Shopping along Chicago's Magnificent Mile? Taking in the view from the top of one of tallest buildings in the US? Perhaps your bucket list includes attending a Cubs game at Wrigley Field or walking from the cornstalks onto the Field of Dreams in Dyersville, Iowa. How about paying tribute to veterans during a visit to the WW I Museum? This tour includes all of that and much, much more! Come celebrate the Magnificent Midwest with us.

Departing Abilene, Big Spring, Midland and San Angelo
Highlights Include:

- 3-nights downtown Chicago
- Chicago's Navy Pier
- Architectural River Cruise
- Skydeck of Willis Tower
- Chicago City Tour
- Shopping along Magnificent Mile
- Tommy Gun's Garage Dinner & Show
- Milwaukee City Tour
- Edelweiss River Cruise
- Abraham Lincoln Home
- Abraham Lincoln Tomb
- Wisconsin Dells
- Frank Lloyd Wright's House on the Rock
- World War I Museum
- Field of Dreams Movie Site (IA)
- Chicago Cubs game (optional add-on)
- Meals: 4 breakfasts, 5 continental breakfasts,
7 lunches or dinners

\$2479 per person (2 people per room)

\$3255 per person (1 person per room)

Travel Protection Insurance: \$239-316 per person

\$50 due upon booking - Final due April 2, 2018



**January
2018 Edition**

Bilbrey Tours, Inc.



Bilbrey Tours is on Facebook!

Search "Bilbrey Tours" to find our page. Click the "Like" button to receive up-to-date information from Bilbrey Tours right on your Facebook homepage. Be one of the first to hear about new tours and changes, see pictures and updates from our tours as they are happening, and keep up with everything and everyone at Bilbrey Tours!

Boston & More! **June 13* - 19, 2018 (Fly)** (7 days – 6 nights)

Departing Abilene

Highlights Include:

- Roundtrip transportation to DFW
- *Overnight in DFW area on June 13
- Roundtrip air from DFW (Call for prices from other airports)
- 5 – nights in Boston hotel on the Charles River
- Evening performance by Boston Pops
- Spirit of Boston lunch cruise
- Boston Duck city tour
- Freedom Trail
- Old North Church
- USS Constitution
- Quincy Market
- Faneuil Hall
- Salem / Cape Ann, MA
- Boston Public Gardens
- Whale watching cruise
- Lexington / Concord MA
- Orchard House – Louisa May Alcott's home
- JFK Presidential Library & Museum
- Nathaniel Hawthorne's House of Seven Gables
- Meals: 5 breakfasts, 1 continental breakfast, 4 lunches or dinners



\$2789 per person (2 people per room)

\$3525 per person (1 person per room)

Travel Protection Insurance: \$239-316 per person

\$100 due upon booking - Final due March 2, 2018

Alaska Cruise Tour

July 10* - 21, 2018 (Fly)

7-Night Cruise plus 3-Night Land
(12 days - 11 nights)

Departing Abilene

Highlights Include:

- Roundtrip transportation to DFW
- *Overnight in DFW area on July 10
- Roundtrip airfare from DFW (call for prices from other airports)
- 7-night cruise aboard *Island Princess*
- Inside Passage (cruising at sea)
- Ketchikan (port of call)
- Juneau (port of call)
- Skagway (port of call)
- Glacier Bay (cruising at sea)
- College Fjord (cruising at sea)
- 3-night land package
- Princess Express Scenic Rail Journey
- Denali Princess Wilderness Lodge
- Denali Natural History Tour
- Fairbanks
- Sternwheeler Riverboat Cruise
- Meals aboard *Island Princess*

Inside Stateroom:

\$4125 per person (2 people per room)

\$5845 per person (1 person per room)

Ins.

\$397

\$472

Outside Private Balcony:

\$4999 per person (2 people per room)

\$7615 per person (1 person per room)

Ins.

\$397

\$629

Travel Protection Insurance available from \$397-629

\$250 deposit due upon booking

Final due April 3, 2018

NOTE: Passport Required



**January
2018 Edition**

Bilbrey Tours, Inc.



Palo Duro Canyon

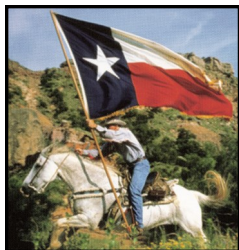
July 19 - 20, 2018

(2 days – 1 night)

Departing Abilene and San Angelo

Highlights Include:

- **TEXAS** Musical Drama set against the back drop of the Palo Duro Canyon
- BBQ Dinner with all the trimmings served outdoors
- Panhandle Plains Museum, the “Largest History Museum in Texas” explores 500 million years across a 26,000 square mile expanse of the Panhandle Plains.
- Cross Ministries-Groom, TX features a 190-ft cross and several bronze sculptures
- Meals: 1 continental breakfast and 1 dinner



\$389 per person (2 people per room)

\$439 per person (1 person per room)

Travel Protection Insurance: \$68 per person

\$25 due upon booking - Final due June 1, 2018

Bilbrey Tours has traveled to 51 countries: Aruba, Antigua & Barbuda, Australia, Austria, Bahamas, Barbados, Belgium, Belize, Bulgaria, Canada, Cayman Islands, Costa Rica, Curacao, Czech Republic, Denmark, England, Estonia, Fiji, Finland, France, Germany, Greece, Guatemala, Holland, Hungary, Ireland, Italy, Jamaica, Liechtenstein, Malta, Mexico, Monaco, Nicaragua, New Zealand, Norway, Panama, Poland, Portugal, Puerto Rico, Romania, Russia, Scotland, Serbia, South Africa, Spain, St Lucia, St Maarten, Sweden, Switzerland, Wales and Zimbabwe.

**Thank you for traveling with
Bilbrey Tours!**

Splendors of the Northwest

Features California and Oregon Coastlines

July 23 - August 6, 2018

(15 days – 14 nights)

Departing Abilene, Big Spring, Lubbock and San Angelo

Highlights Include:

- Spectacular California and Oregon Coastlines
- 3 nights along the Oregon Coast
- 2 nights along the Columbia River
- Evergreen Aviation Museum/Spruce Goose
- Redwood National Park
- Trees of Mystery and Tour-through tree
- International Rose Test Garden
- Oregon Coast Aquarium
- Multnomah Falls
- Crown Point Vista House
- Oregon Trail Interpretive Center
- Bonneville Dam
- Arches National Park
- Utah Olympic Park
- Salt Lake City Temple Square
- Meals: 4 breakfasts and 10 continental breakfasts
11 lunches or dinners



\$3425 per person (2 people per room)

\$4524 per person (1 person per room)

Travel Protection Insurance: \$316-397 per person

\$50 due upon booking - Final due May 21, 2018

Route thru New Mexico, Colorado, Utah, Nevada, California, Oregon, Washington and Idaho.



**January
2018 Edition**

Bilbrey Tours, Inc.



**Rhine River Cruise
Holland, Germany & France
September 5 - 14, 2018 (Fly)
(10 days - 9 nights)**

Departing Abilene

Highlights Include:

- Roundtrip transportation to DFW
- Roundtrip air from DFW; call for other airports
- 7-night cruise aboard the *MS Amadeus Silver III*
- Amsterdam, Netherlands
- Cologne, Germany
- Moselle River
- Cochem Wine Tasting
- Koblenz, Germany
- Rudesheim, Germany
- Siegfried's Mechanical Music Museum
- Mannheim, Germany
- Speyer, Germany
- Strasbourg, France
- Colmar, France
- Black Forest, Germany
- Meals: 8 breakfasts, 6 lunches, 8 dinners

****Single accommodations not available****

Middle Outside

\$5959 per person (2 people per room)

Upper Outside

\$6259 per person (2 people per room)

Full payment due upon booking



Travel Protection Insurance: \$360 per person
Insurance is optional and due upon booking; premium is non-refundable. *Medicare does not pay outside the United States.*
Tour is operated by Collette

NOTE: Passport Required



**Made in America
September 17 - 21, 2018
(5 days – 4 nights)**

**Departing Abilene, Big Spring, Midland and San Angelo
Highlights Include:**

- 2-nights Little Rock, AR - River Market District
- Bureau of Engraving and Printing
- NoKona American Ballgloves tour
- Resistol Hats tour and outlet shopping
- Sweet Shop USA - tour and tasting
- Marlsgate Plantation - dinner & tour
- Heifer International
- Southwest Dairy Farmers' Museum
- Little Rock City Tour
- Clinton Presidential Library and Museum
- Meals: 4 continental breakfasts,
5 lunches or dinners

\$919 per person (2 people per room)

\$1159 per person (1 person per room)

Travel Protection Insurance: \$99-\$137 per person

\$25 due upon booking - Final due August 2, 2018

**From State Capital to Silos
Austin & Waco**

**September 25 - 27, 2018
(3 days – 2 nights)**

Enjoy a three-day getaway in the Lone Star State. Former Abilenian Patty Hundley serves as our guide in the capital city of Austin before we proceed to Waco for a visit to Magnolia Market, made famous by HGTV's Chip & Joanna Gaines. Our final stop will be Homestead Heritage's Craft Village, which stresses simplicity, self-sufficiency, service, and quality workmanship.

**Departing Abilene, Brownwood and San Angelo
Highlights Include:**

- Texas State Capitol tour
- Texas State History Museum
- Austin City Tour - guided by Patty Hundley
- Magnolia Market at the Silos
- Homestead Craft Village
- Meals: 2 continental breakfasts,
2 lunches or dinners

\$589 per person (2 people per room)

\$709 per person (1 person per room)

Travel Protection Insurance: \$99 per person

\$25 due upon booking - Final due August 13, 2018

**January
2018 Edition**

Bilbrey Tours, Inc.



**Fall Trains & Foliage
New England including Cape Cod
October 5* - 14, 2018 (Fly)
(10 days – 9 nights)**

Departing Abilene

Highlights Include:

- Roundtrip transportation to DFW
- *Overnight in DFW area on October 5
- Roundtrip air from DFW (Call for prices from other airports)
- Massachusetts, Maine, New Hampshire
- Vermont, Connecticut, Rhode Island
- 1-night Cape Cod
- Norman Rockwell Museum
- Conway Scenic Railroad
- Essex Steam train & Riverboat
- Cape Cod Railway
- Trapp Family Lodge
- Mark Twain House & Museum
- Vanderbilt's The Breakers
- Boston City Tour
- JFK Presidential Library & Museum
- Quincy Market
- Mystic Seaport Museum
- Nubble Lighthouse
- Kennebunkport, ME
- Meals: 3 breakfasts, 6 continental breakfasts, 8 lunches or dinners

\$2999 per person (2 people per room)

\$3669 per person (1 person per room)

Travel Protection Insurance: \$239-316 per person

\$100 due upon booking - Final due July 2, 2018

**Albuquerque Balloon Fiesta
Includes Santa Fe and Durango
October 8 - 14, 2018
(7 days – 6 nights)**

**Departing Abilene, Big Spring and Lubbock
Highlights Include:**

- Albuquerque International Balloon Fiesta
- Mass Ascension
- Balloon Glow
- Old Town Albuquerque
- Albuquerque City Tour
- Indian Pueblo Cultural Center
- Santa Fe Plaza
- Loretto Chapel
- San Francisco de Asis Mission
- Santa Fe city tour
- Durango and Silverton Train
- Mesa Verde National Park
- 4-Corners Monument
- Meals: 1 breakfast, 5 continental breakfasts, 5 lunches or dinners

\$1599 per person (2 people per room)

\$2079 per person (1 person per room)

Travel Protection Insurance: \$177-239 per person

\$25 due upon booking - Final due July 3, 2018



**January
2018 Edition**

Bilbrey Tours, Inc.



**Kentucky Bluegrass Fall Foliage
Arkansas, Tennessee & Kentucky
October 23 - November 1, 2018
(10 days – 9 nights)**

**Departing Abilene, Big Spring and Midland
Highlights Include:**

- Loretta Lynn's Homeplace Butcher Holler
- My Old Kentucky Home
- My Old Kentucky Dinner Train
- 2 - Music Shows at Renfro Valley
- Kentucky Horse Park
- Toyota Factory Tour
- Corvette Museum
- Abraham Lincoln Historic Site
- Andrew Jackson's Hermitage
- General Patton Museum
- Bardstown City Tour
- Dinner at a 1828 Mansion
- Heaven Hill Distilleries
- Shaker Village
- Meals: 9 continental breakfasts,
9 lunches or dinners

\$2245 per person (2 people per room)

\$2815 per person (1 person per room)

Travel Protection Insurance: \$239 per person

\$50 due upon booking - Final due August 1, 2018



**Gift Certificates
are available
Call Today!**

**Autumn in the Mountains
of Arkansas
October 29 - November 2, 2018
(5 days – 4 nights)**

**Departing Abilene and San Angelo
Highlights Include:**

- 2-nights The Lodge at Mount Magazine
- Mount Magazine State Park
- Star gazing at Mount Magazine
- Petit Jean State Park
- Lunch at Mather Lodge
- Subiaco Abbey - monastery established in 1877
- Wiederkehr Winery & Village - Swiss winemaking
for 135 years
- Express Clydesdale
- Meals: 2 breakfasts, 2 continental breakfasts,
4 lunches or dinners

\$995 per person (2 people per room)

\$1249 per person (1 person per room)

Travel Protection Insurance: \$99-137 per person

\$25 due upon booking - Final due September 7, 2018

**Branson Christmas
November 5 - 10, 2018
(6 days – 5 nights)**

**Departing Abilene, Big Spring, Midland and San Angelo
Highlights Include:**

- *Samson* - Sight and Sound Theatre
- Showboat Branson Belle - lunch and cruise
- Presleys' Country Jubilee
- The Texas Tenors
- The Dutton's
- Tour College of
the Ozarks &
Ralph Foster
Museum
- Local Shopping
and Sightseeing
- Meals: 5 conti-
nental breakfasts, 4 lunches or dinners



\$1129 per person (2 people per room)

\$1395 per person (1 person per room)

Travel Protection Insurance: \$137 per person

\$25 due upon booking-Final due September 20, 2018

**January
2018 Edition**

Bilbrey Tours, Inc.



San Antonio Christmas

Includes Fredericksburg

November 23 - 26, 2018

(4 days – 3 nights)

Departing Abilene and San Angelo

Highlights Include:

- 2 nights at a Riverwalk hotel
- Seating for Christmas River Parade
- Institute of Texan Cultures
- SAS Shoe Outlet
- Lunch atop Tower of the Americas
- 1 night in Fredericksburg
- The Peddler Show (Country Craft Show)
- Lunch at YO Ranch Hotel in Kerrville
- Meals: 3 continental breakfasts
3 lunches or dinners

\$799 per person (2 people per room)

\$1015 per person (1 person per room)

Travel Protection Insurance: \$99-137 per person

\$25 due upon booking - Final due October 3, 2018

Christmas Mystery Tour

December 6 - 9, 2018

(4 days – 3 nights)

Departing Abilene

Highlights Include:

- Join us on our Christmas Mystery Tour to an unknown destination!
- Enjoy the sights, sounds and smells of Christmas.
- Meals: 3 continental breakfasts,
4 lunches or dinners



\$789 per person (2 people per room)

\$979 per person (1 person per room)

Travel Protection Insurance: \$99 per person

\$25 due upon booking - Final due October 2, 2018

Smoky Mountain Christmas

November 27 - December 4, 2018

(8 days – 7 nights)

Departing Abilene, Big Spring, Lubbock and Midland

Highlights Include:

- 2-nights Pigeon Forge, TN
- Christmas at the Smoky Mountain Opry
- 1-night at the Village Hotel on Biltmore Estate
- Biltmore Mansion Tour
- Biltmore Candlelight Mansion Tour
- Dinner at Biltmore's Deerpark Restaurant
- Dollywood
- Incredible Christmas Place
- Christ in the Smokies
- 26th Annual National Gingerbread House competition winning creations display
- Asheville City Tour
- Brunch at Omni Grove Park Inn
- Meals: 7 continental breakfasts
6 lunches or dinners

\$1929 per person (2 people per room)

\$2449 per person (1 person per room)

Travel Protection Insurance: \$177-239 per person

\$50 due upon booking - Final due August 24, 2018

Pasadena Rose Parade

**December 28*, 2018 - January 2,
2019 (Fly)**

(6 days - 5 nights)

Departing Abilene

Highlights Include:

- Roundtrip transportation from Abilene to DFW
- *Overnight in DFW area Dec. 28
- Roundtrip air from DFW
- Reserved Seating for 130th Annual Tournament of Roses Parade
- New Year's Eve Dinner Party
- Rose Parade Floats on Display
- Ronald Reagan Presidential Library
- Air Force One
- Warner Brothers Studios Tour
- Hollywood and Beverly Hills City Tour
- Movie night "under the stars"
- Meals: 4 breakfasts, 1 continental breakfast,
2 lunches & 2 dinners



\$2849 per person (2 people per room)

\$3129 per person (1 person per room)

Travel Protection Insurance: \$239-316 per person

\$200 due upon booking - Final due September 28, 2018

January
2018 Edition

Bilbrey Tours, Inc.



2019 Tours



Costa Rica **February 11 - 19, 2019 (Fly)** (9 days - 8 nights)

Departing Abilene

Highlights Include:

- Roundtrip transportation to DFW
- Roundtrip air from DFW; call for prices from other airports
- San Jose, Costa Rica
- Coffee Plantation tour
- Guanacaste
- Monteverde Cloud Forest
- Hanging Bridges Walking Tour
- Arenal Volcano
- Lake Arenal Cruise
- Cano Negro Wildlife Refuge
- Zarcero (Province of Alajuela)
- National Theatre
- Plaza de Cultura
- Meals: 8 breakfasts and 5 dinners

\$3370 per person (2 people per room)

\$4020 per person (1 person per room)

\$500 due upon booking - Final due August 6, 2018

Travel Protection Insurance: \$315 per person
Insurance is optional and due upon booking;
premium is non-refundable. *Medicare does not pay outside the United States.*
Tour is operated by Collette.

NOTE: Passport Required



Australia & New Zealand **February 19 - March 5, 2019 (Fly)** (15 days - 14 nights)

Departing Abilene

Highlights Include:

- Roundtrip transportation to DFW
- Roundtrip air from DFW; call for prices from other airports
- 3 nights Cairns, Australia
- 3 nights Sydney, Australia
- 2 nights Christchurch, New Zealand
- 4 nights Queenstown, New Zealand
- Great Barrier Reef
- Sydney Opera House
- Hartley's Croc Farm; home to birds, reptiles, wallabies & koalas
- Arrowtown
- Central Otago winery
- Milford Sound
- Gondola ride to the Skyline Restaurant
- Home-hosted dinner with New Zealand family
- Meals: 12 breakfasts, 2 lunches and 6 dinners

\$7849 per person (2 people per room)

\$9349 per person (1 person per room)

\$500 due upon booking - Final due August 15, 2018

Travel Protection Insurance: \$360 per person
Insurance is optional and due upon booking;
premium is non-refundable. *Medicare does not pay outside the United States.*
Tour is operated by Collette.



NOTE: Passport Required



**January
2018 Edition**

Bilbrey Tours, Inc.



TERMS AND CONDITIONS

Bilbrey Tours, Inc. has been in business since 1990 and is a member of the National Tour Association, Cruise Lines International Association, American Bus Association, Abilene Chamber of Commerce and is a BBB Accredited Business.

Bilbrey Tours owns luxury motorcoaches with pull-down window shades, video monitors, foot rests, cup holders, reclining seats, individual map pockets, large overhead storage and restroom facility.

Photographs of travelers may be used in publications, social media, Bilbrey Tours webpage and at travel shows. Anyone declining permission must notify Bilbrey Tours Inc in writing.

Smoking/Liquor

Smoking, e-cigarettes and alcoholic beverages are not permitted on the motorcoach. Frequent (about every two and a half hours) rest/meal stops afford smoking opportunities.

Physical Disability

In compliance with the Americans With Disabilities Act, Bilbrey Tours, Inc. will make reasonable efforts to accommodate the special needs of tour participants. It is strongly recommended that persons requiring assistance be accompanied by a companion who is capable of and totally responsible for providing the assistance. Neither Bilbrey Tours, Inc. personnel nor its suppliers may physically lift or assist clients onto transportation vehicles or within hotel rooms. Travelers needing special assistance must notify Bilbrey Tours, Inc. at the time of booking to determine what assistance may reasonably be made available by Bilbrey Tours, Inc.

Tour Price Includes

Transportation from Abilene (other cities noted), hotel accommodations, hotel baggage handling for one piece of luggage, admissions to included attractions, meals as specified, services of a tour escort and gratuity for driver, unless otherwise noted.

Tour Prices are subject to fuel supplement surcharges by airlines, cruise lines and other vendors.

Unused Features

No refund or credit will be given, in whole or in part, for unused air transportation, land transportation, hotel accommodations, or other features you voluntarily do not use.

Single / Triple Accommodations

Please understand that a "single" reservation means single accommodations at the hotels, and does not guarantee a double seat on the motorcoach. Be advised that "triple" accommodations at the hotels will be two beds only. It does not cover the cost of a rollaway.

Seating

In an effort to be fair to all travelers, Bilbrey Tours, Inc. will use a seat-rotation system. Your tour escort will remind you when to rotate seats. If you anticipate any difficulty with this system, you must contact Bilbrey Tours, Inc. prior to tour.

Changes In Accommodations

If a single room must be assigned because your roommate cancels (even if at the last moment or while on the tour), we must out of necessity charge you the supplement or pro rata thereof since the hotels make no allowance. Likewise, if one of three roommates cancels, resulting in double, rather than triple occupancy, your final billing must be based on double occupancy.

Travel Documents

Your travel documents will be sent approximately two to three weeks prior to departure. Documents include tour itinerary, departure and arrival information, hotel information, clothing suggestions, baggage tags, plus any helpful hints.

Agency Responsibility

Bilbrey Tours, Inc., Abilene, Texas acts solely as your agent arranging for transportation, lodging, and sightseeing activities, and will not be liable for any delayed departures or arrivals or for any damages, losses or injuries to person or property. Full payment by the tour member constitutes the tour member's acceptance of these terms and conditions.

No liability is assumed in connection with any transportation, restaurants or lodging used for the duration of these tours. Although every effort is made to handle your luggage carefully, we are not responsible for lost, stolen, or damaged articles, including luggage or personal property. We reserve the right to cancel any tour prior to departure, and in such case, our total obligation will be only to refund all payment toward said tour. Bilbrey Tours Inc. will not be liable for matters beyond our control including but not limited to traffic congestion, airline delays, airline cancellations, weather conditions, Government shutdowns or acts of God. Bilbrey Tours, Inc reserves the right to refuse service to any person.

Refund Policy

For cancellations after time of booking to date of final payment:

Full refund less penalties assessed by airlines, cruise lines and other vendors.

For cancellations from date of final payment to 15 days prior to travel:

50% refund less insurance premium and penalties assessed by airlines, cruise lines and other vendors.

For cancellations 14 days to day of travel:

No refund.

Travel Protection Insurance

An optional Travel Protection Insurance is available for purchase on overnight tours. A complete outline of coverage is available upon request. Insurance is effective from the date of purchase. To be valid all insurance payments must be received with or before final payment of tour. In the event you are prevented from taking your tour because: You, a Traveling Companion, or an Immediate Family member suffers an Injury, Sickness, or Death your tour cost will be refunded by insurance company, pending claim approval outlined in policy. Insurance cost is non-refundable after final payment date. **All cancellations must be reported to Bilbrey Tours, Inc. within 72 hours of the problem causing the need to cancel.**

- **IMPORTANT:** You must be medically capable of travel on the day You purchase this plan. The reason for cancellation or interruption of Your Trip must first occur after Your effective date of Trip Cancellation benefits.

All claims must be completed by attending physician. The reason for cancellation or interruption of Your Trip must be determined by attending physician that You are unable to travel.

Make checks payable to:

**Bilbrey Tours, Inc.
3262 South 27th Street
Abilene, Texas 79605**



*Lena's legacy
lives on!*

Lena Bilbrey not only had a love for travel but a love for people both near and far. Prior to her passing in 2016, Lena shared with her family a wish she had to provide water for individuals that otherwise had no access to viable drinking water in Uganda. The Bilbrey family, the Bilbrey Tours family, friends and travelers have made that wish a reality. Bilbrey Tours is proud to announce that through our partnership with the John 4:14 Foundation from Midland, Texas, we have completed six water wells throughout Uganda as part of Lena's Legacy. Each well serves thousands of people in the surrounding villages. All of the six wells are inscribed with Lena's name and a Bible verse special to us at Bilbrey Tours - Psalms 118:24 ***"This is the day the Lord has made. I will rejoice and be glad in it."***

Bilbrey Tours remains committed to continuing Lena's legacy through future wells. Proceeds from every trip you take with Bilbrey Tours will advance her dream and fund additional wells. We also solicit your prayers for Rhonda Bilbrey as she travels to Uganda in February 2018 to visit the villages that are served by Lena's Legacy wells. To learn more about John 4:14 Foundation and their works, please visit www.j414.org

BILBREY TOURS

3262 South 27th Street

Abilene, TX 79605

RETURN SERVICE REQUESTED